



RESIDENTIAL

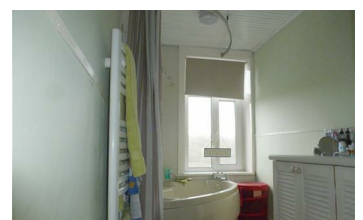
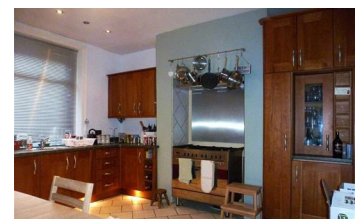
SALES | LETTINGS | PROPERTY MANAGEMENT



453 Manchester Road, Huddersfield, HD7 5RD Offers In Excess Of £149,995



*ATTENTION** Offered for SALE is this good sized, TWO double bed roomed, stone built, through terraced property with unspoilt views to the front elevation. Ideally suited for a first time buyer of investors, situated in this popular area of Linthwaite being close to all local amenities, bus routes and schools and easy access to motorway Networks. The property boasts double glazing and gas fire central heating. Comprises: - entrance hallway, lounge with views across the hillside, large dining kitchen, access to keeping cellar. To the first floor landing: House bathroom with corner bath and separate w/c, two good size bedrooms with views across the hill side to the front elevation. Externally the property has tiered frontage and enclosed cottage garden to the rear with patio areas. On street parking to front, Viewings are highly recommended. Please call ADM Residential to arrange a viewing.



- TROUGHT TERRACE
- DINING KITCHEN
- GAS CENTRAL HEATED
- GARDENS
- TWO DOUBLE BEDROOMS
- VIEWS TO FRONT
- DOUBLE GLAZED

55 Market Street, Milnsbridge, Huddersfield, HD3 4HZ
T: 01484 644555 | E: sales@admresidential.co.uk
www.admresidential.co.uk

